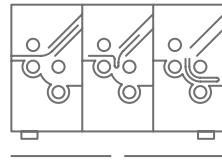


B30

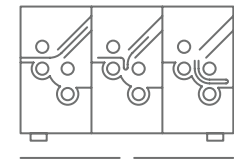


BUCKLE FOLDING MACHINES

Technical specifications

BUCKLE FOLDING MACHINES

B30

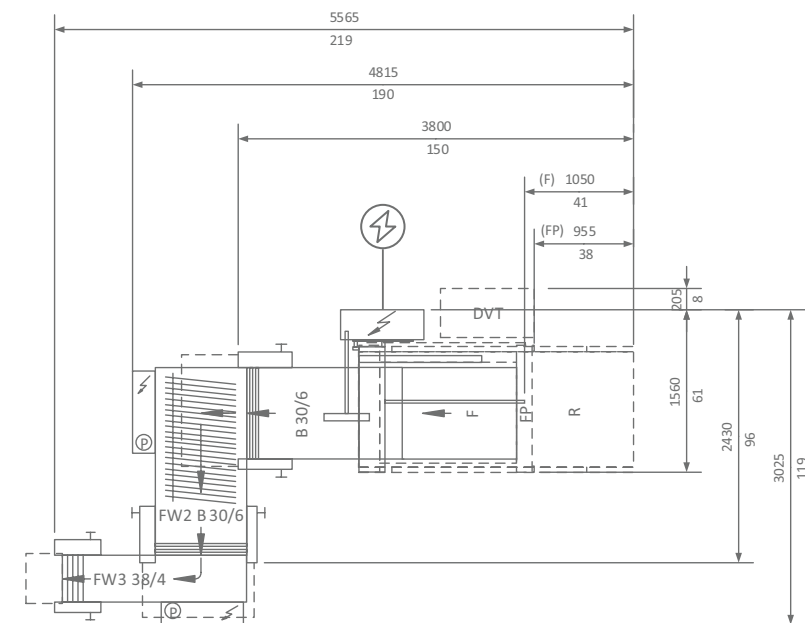


Technical Specifications	B30 – F		B30 – FP		B30 – R		Folding unit II 76		Folding unit III 38		
	mm	inch	mm	inch	mm	inch	mm	inch	mm	inch	
Pile height	max.	650	25 1/2	950	37 3/8	80	3 1/8	–	–	–	–
Infeed width	min.	150	6	170	6 3/4	150	6	100	4	100	4
	max.	760	30	760	30	760	30	760	29 7/8	380	15
Infeed length	min.	200 (170) ¹	8 (6 3/4) ¹	250 (170) ¹	9 3/4 (6 3/4) ¹	180	7	–	–	–	–
	max.	1,200	47 1/4	1,200	47 1/4	1,080 (2,000)	42 1/2 (78 3/4)	–	–	–	–
Folding length	min.	60	2 3/8	60	2 3/8	60	2 3/8	60	2 3/8	60	2 3/8
Number of buckle plates		4 or 6		4 or 6		4 or 6		4 or 6		4	
Fold roller diameter		43.7	1 3/4	43.7	1 3/4	43.7	1 3/4	43.7	1 3/4	43.7	1 3/4
Slitter shaft diameter		35	1 3/8	35	1 3/8	35	1 3/8	35	1 3/8	35	1 3/8
Product thickness at exit (thicker on request)	max.	1.8	1/16	1.8	1/16	1.8	1/16	2	5/64	2	5/64
Speed	min.	30 m/min (98 fpm)									
	max.	205 m/min (670 fpm)									
Electrical supply	M1 Basic	6.6 kVA		8.1 kVA		7.6 kVA		2.4 kVA		1.6 kVA	
	3 x 400 V 50/60 Hz 3 x 220 V 50/60 Hz	max. 63 A		max. 63 A		max. 63 A		max. 32 A		max. 32 A	

¹ With small format device

Technical Drawing Floorplan B30 with folding unit II and III

Measurements: mm
inch



Electrical supply

MBO

KOMORI Group

MANUFACTURING BEYOND OPTIMIZATION

MBO Postpress Solutions GmbH
Grabenstrasse 4–6 / 71570 Oppenweiler / Germany
Phone +49 (0) 7191 46-0 / www.mbo-pps.com

Your contact partner

INFO@MBO-PPS.COM

This brochure is subject to change without notice. The technical specifications vary depending upon paper quality.

07/2025_v2

MBO | KOMORI Group

MANUFACTURING BEYOND OPTIMIZATION

